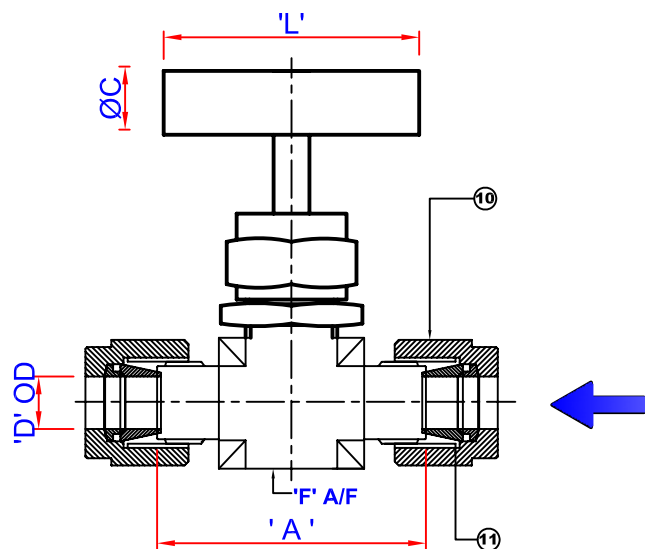


NOTE: DIFFERENT END CONNECTIONS AND MATERIAL GRADES OFFERED ON REQUEST.

DESIGN FEATURES :

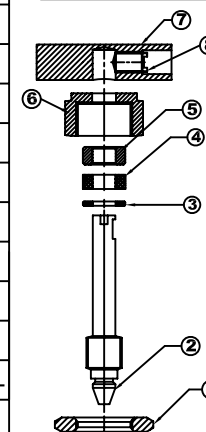
-STEM SEAL BELOW ACTUATING THREADS TO PREVENT CONTAMINATION, GAULING OF THREADS.



BILL OF MATERIAL

SR.NO	DESCRIPTION	QTY	MATERIAL
1	LOCK NUT	1	SS
2	SPINDLE	1	SS 316
3	SPACER1	1	SS 316
4	GLAND PACKING	1	PTFE
5	SPACER2	1	SS 316
6	GLAND NUT	1	SS 316
7	HANDLE	1	SS
8	GRUB SCREW	1	SS
9	BODY	1	A 182 F 316L
10	NUT	2	SS 316
11	FERRULE SET	2	SS 316

DETAILS OF SUB-ASSY



TEST PRESSURES:

	HYDRAULIC	PNEUMATIC (NITROGEN)
BODY	9000 PSI	1000 PSI
SEAT	6600 PSI	1000 PSI

FEATURES :

- WORKING PRESSURE : 6000 PSI
- TEMPERATURE RATING : PTFE 450° F (232° C).
- MATERIAL OF CONSTRUCTIONS : SS 316.
- STEM PACKING : PTFE.
- CHOICE OF PACKING MATERIALS FOR ELEVATED TEMPERATURES.
- ALL VALVES ARE 100% FACTORY TESTED.

TESTING :

- HYDROSTATIC SHELL TEST IS PERFORMED AT 1.5 TIMES THE WORKING PRESSURE.
- OPTIONAL TESTS ARE AVAILABLE ON REQUEST.

LUBRICATION :

- DYE MOLLY SULPHIDE.

CLEANING & PACKAGING :

- ALL COMPONENTS ARE ULTRASONICALLY CLEANED PRIOR TO ASSEMBLY & TESTING.

ORIFICE : ØE

PART NOS.	D	A	F	L	Ø C	ØE
IVI - TOD - NV - 4	1/4"	52	22	50	10	2.5
IVI - TOD - NV - 6	3/8"	52	22	50	10	2.5
IVI - TOD - NV - 8	1/2"	52	22	50	10	3

SIZE :

TUBE OD NEEDLE VALVE

DRAWN	BY	DATE	DIMENSIONS ARE FOR REFERENCE ONLY & SUBJECT TO CHANGE
CHD.	RD	14/08/2009	MODEL . NO :- IVI-TOD-NV
APPRD.	RD	14/08/2009	



INDUSTRIAL VALVES
MUMBAI - 64