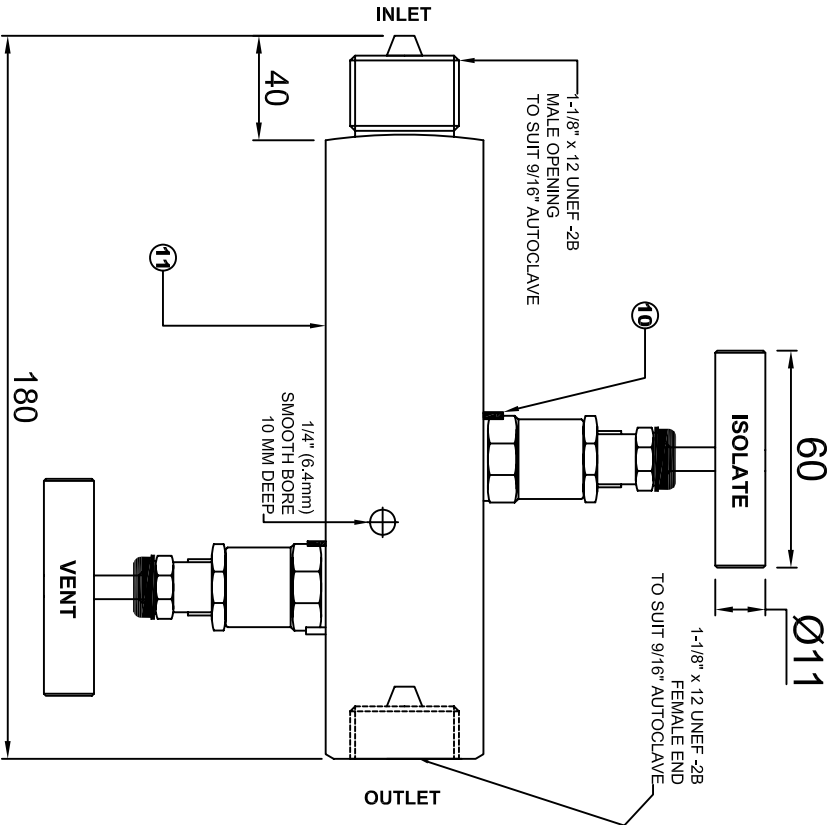
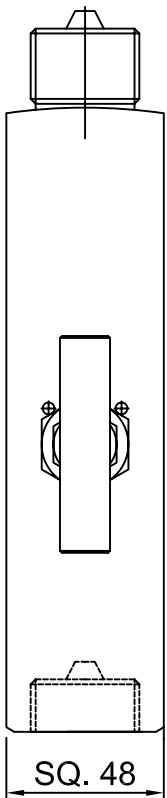
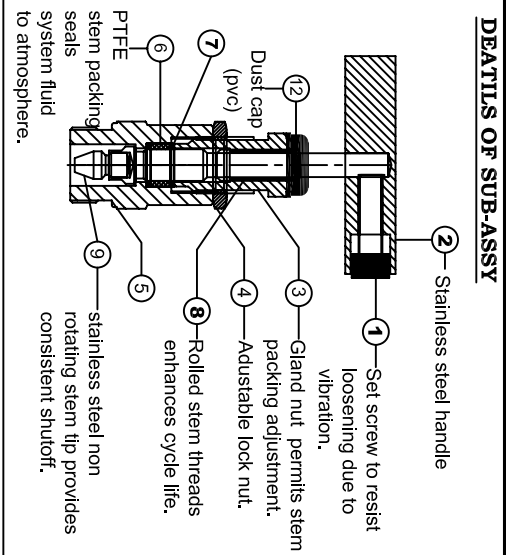


NOTE: DIFFERENT END CONNECTIONS AND MATERIAL GRADES OFFERED ON REQUEST.



NO	DESCRIPTION	QTY	MATERIAL
1	SET SCREW	1	SS
2	HANDLE	1	SS
3	GLAND NUT	1	SS 316
4	LOCK NUT	1	SS
5	BONNET	1	SS 316
6	GLAND PACKING	1	PTFE
7	WASHER	2	SS 316
8	STEM	1	SS 316
9	DISC	1	SS 316
10	LOCK PIN	1	SS
11	BODY	1	SS 316
12	DUST COVER	1	PVC



DETAILS OF SUB-ASSY

1 - Set screw to resist loosening due to vibration.
 2 - Stainless steel handle
 3 - Gland nut permits stem packing adjustment.
 4 - Adjustable lock nut.
 5 - Rolled stem threads enhances cycle life.
 6 - PTFE stem packing seals
 7 - PTFE stem packing seals
 8 - stainless steel non rotating stem tip provides consistent shutoff.
 9 - stainless steel non rotating stem tip provides consistent shutoff.
 10 - stainless steel non rotating stem tip provides consistent shutoff.
 11 - stainless steel non rotating stem tip provides consistent shutoff.
 12 - Dust cap (pvc)

DESIGN FEATURES:
 -STEM SEAL BELOW ACTUATING THREADS TO PREVENT CONTAMINATION, GAULING OF THREADS.
 -METAL TO METAL BONNET SEAL FOR PRESSURE TIGHTNESS EVEN AT ELEVATED TEMPERATURES.

BONNET ASSEMBLY:
 -SCREWED BONNET DESIGN.
 -SPINDLE - GROUND & THREAD ROLLED.
 -SPINDLE TIP - NON ROTATING TIP SHUT OFF TYPE
 -BONNET PUSHER - DULY MACHINED FOR SMOOTH STEM CYCLE
 -DUST CAP - PROTECTS STEM THREADS FROM EXTERNAL CONTAMINATION.

FEATURES:
 -WORKING PRESSURE : 20000 PSI
 -TEMPERATURE RATING : - PTFE 450° F (232° C).
 -MATERIAL OF CONSTRUCTIONS : SS 316.
 -STEM PACKING : PTFE.
 -ORIFICE: 4mm
 -ALL VALVES ARE 100% FACTORY TESTED.
TESTING:
 -HYDROSTATIC SHELL TEST IS PERFORMED AT 1.5 TIMES THE WORKING PRESSURE.
 -OPTIONAL TESTS ARE AVAILABLE ON REQUEST.
LUBRICATION:
 -DYE MOLLY SUDPHIDE.
CLEANING & PACKAGING:
 -ALL COMPONENTS ARE ULTRASONICALLY CLEANED PRIOR TO ASSEMBLY & TESTING.

TEST PRESSURES:

	HYDRAULIC	PNEUMATIC (NITROGEN)
BODY	30000 PSI	2000 PSI
SEAT	22000 PSI	2000 PSI

SIZE : $\frac{3}{8}$ " AUTOCLAVE THREAD

BLOCK AND BLEED

BY	DATE	DIMENSIONS ARE FOR REFERENCE ONLY & SUBJECT TO CHANGE
PRASHANT RD	04/01/2011	
RD	04/01/2011	MATERIAL: SS 316
APPRD.	RD	04/01/2011



INDUSTRIAL VALVES
 MUMBAI - 64