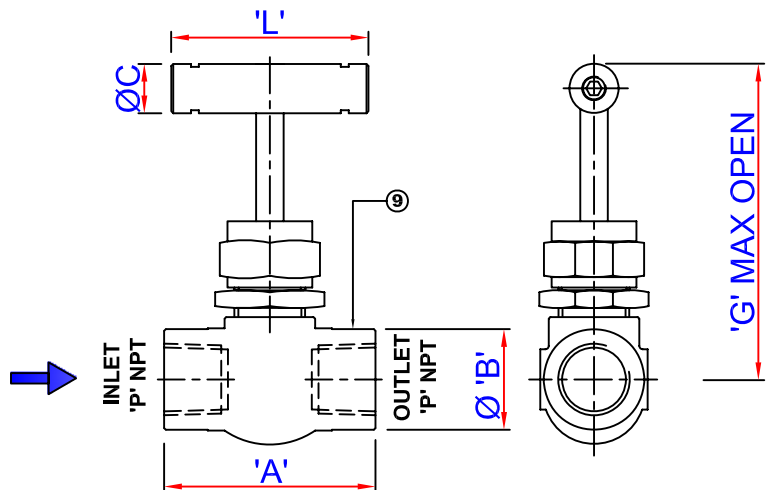


**NOTE:** DIFFERENT END CONNECTIONS AND MATERIAL GRADES OFFERED ON REQUEST.

**DESIGN FEATURES :**

-STEM SEAL BELOW ACTUATING THREADS TO PREVENT CONTAMINATION, GAULING OF THREADS.

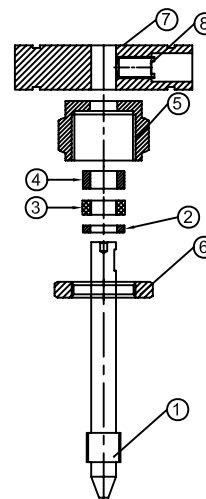


ORIFICE : ØE							
PART NOS.	P	B	A	G	L	ØC	ØE
IVI - FG - FF - 4	1/4"	19	50	69	50	1/2"	4
IVI - FG - FF - 6	3/8"	25	52	80	50	1/2"	4
IVI - FG - FF - 8	1/2"	30	63	102	76	16	6
IVI - FG - FF - 10	3/4"	35	70	118	82	16	8
IVI - FG - FF - 12	1"	43	82	122	82	16	9

**BILL OF MATERIAL**

SR. NO	DESCRIPTION	QTY	MATERIAL
1	SPINDLE	1	SS 316 / SS 410
2	SPACER	1	SS 316 / SS 410
3	GLAND PACKING	1	PTFE
4	PUSHER	1	SS 316 / SS 410
5	GLAND NUT	1	SS 316 / SS 410
6	LOCK NUT	1	SS / CS
7	HANDLE	1	SS / CS
8	GRUB SCREW	1	SS / CS
9	BODY	1	A 182 F316L / A105

**DETAILS OF SUB-ASSY**



**FEATURES :**

- SIZE :
- WORKING PRESSURE : 6000 PSI
- TEMPERATURE RATING : PTFE 450° F (232° C).
- MATERIAL OF CONSTRUCTIONS : SS 316 / CS
- STEM PACKING : PTFE.
- CHOICE OF PACKING MATERIALS FOR ELEVATED TEMPERATURES.
- ALL VALVES ARE 100% FACTORY TESTED.

**TESTING :**

- HYDROSTATIC SHELL TEST IS PERFORMED AT 1.5 TIMES THE WORKING PRESSURE.
- OPTIONAL TESTS ARE AVAILABLE ON REQUEST.

**LUBRICATION :**

- DYE MOLLY SULPHIDE.

**CLEANING & PACKAGING :**

- ALL COMPONENTS ARE ULTRASONICALLY CLEANED PRIOR TO ASSEMBLY & TESTING.

**TEST PRESSURES:**

	HYDRAULIC	PNEUMATIC (NITROGEN)
BODY	9000 PSI	1000 PSI
SEAT	6600 PSI	1000 PSI

**SIZE :**

**FORGED BODY NEEDLE VALVE**

BY	DATE	DIMENSIONS ARE FOR REFERENCE ONLY & SUBJECT TO CHANGE	
DRAWN PRASHANT	14/08/2009		
CHD. RD	14/08/2009	MODEL . NO :- IVI-NV-INT-FG	
APPRD. RD	14/08/2009		



**INDUSTRIAL VALVES**  
MUMBAI - 64